



Computer input devices for physically disabled users

Manual for mouse button emulator

DIPAX ClickMaster

Contents

LICENSING AGREEMENT / COPYRIGHT	2
INSTALLING DIPAX CLICKMASTER	3
UNINSTALLING DIPAX CLICKMASTER.....	3
STARTING AND CLOSING CLICKMASTER	3
WORKING WITH CLICKMASTER.....	4
CLICKMASTER AND DIPAX SCANMOUSE.....	5
OPTIONS OF APPEARANCE	6
CONFIGURATION MENU.....	7
General settings.....	8
Appearance settings.....	10
Optional settings for dynamic display	11
NOTE FOR WINDOWS® VISTA.....	12
REMOTE CONTROL OF CLICKMASTER.....	13
CONFIGURATION FILE 'CLICKMASTER.INI'	14
CONTACT	15

For further questions please refer to support@dipax.de.
You will find the latest version of DIPAX ClickMaster at www.dipax.de

Licensing agreement / Copyright

THE LICENSE PERMITS YOU TO INSTALL COPIES OF THE SOFTWARE ON DIFFERENT COMPUTERS, SUBJECT TO THE CONDITION THAT THE SOFTWARE IS ONLY USED ON ONE COMPUTER AT THE TIME.

THE SOFTWARE IS REGARDED AS 'USED' ON A COMPUTER IF IT IS INSTALLED ON A PERMANENT STORAGE (I.E. HARD DRIVE, CD-ROM, FLASH, OR OTHER).

YOU MAY MAKE ONE COPY OF THIS SOFTWARE FOR BACKUP PURPOSES. YOU ARE ALLOWED TO CEDE ALL RIGHTS FROM THIS AGREEMENT IRREVOCABLE TO A THIRD PARTY, SUBJECT TO THE CONDITION THAT AT THE SAME TIME OF THE SALE OR TRANSFER OF THE USAGE RIGHTS, THE ENTIRE PACKAGE IS HANDED OVER (CONTAINING ALL PARTS, DATA MEDIA, PRINTED DOCUMENTS, HARDWARE INSTALLATIONS, AND THIS VERY LICENSING AGREEMENT, AS WELL AS ALL UPDATES AND VERSIONS), PROVIDED THE THIRD PARTY ACCEPTS WITHOUT PROVISOS OR ANY LIMITATIONS THIS LICENSING AGREEMENT

BEYOND THE GRANTING OF THIS LICENSING AGREEMENT, OR BEYOND AN EXPLICIT WRITTEN PERMIT THE FOLLOWING IS STRICTLY FORBIDDEN:

- THE USAGE, COPYING, MODIFICATION, TRANSFER OF THE PRODUCT AND THE RELATED DOCUMENTATION, AS WELL AS A WHOLE AS IN PARTS.
- THE MODIFICATION OR REMOVAL OF THE CREATOR'S MARKS, MANUFACTURER'S LABELS OR TAGS.
- THE LOAN OR LEASING OF THE PRODUCT.
- DECOMPILATION, DEASSEMBLING, REVERSE ENGINEERING, OR ANY OTHER ATTEMPT TO PRODUCE THE SOURCE CODE OF THE SOFTWARE.

===== COPYRIGHT =====

THE OWNERSHIP AND COPYRIGHT OF THE PACKAGE 'DIPAX CLICKMASTER' (I.E. SOFTWARE, DOCUMENTATION, PICTURES, AND TEXT) STAY WITH THE MANUFACTURER AND ARE PROTECTED BY COPYRIGHT LAWS AND INTERNATIONAL COPYRIGHT CONTRACTS, AS WELL AS BY OTHER LAWS AND AGREEMENTS FOR THE PROTECTION OF INTELLECTUAL PROPERTY.

THE USER IS GRANTED A LICENSE FOR USING THE PACKAGE 'DIPAX CLICKMASTER'; IT IS NOT BEING SOLD TO THE USER, BUT REMAINS PROPERTY OF THE MANUFACTURER. THIS LICENSING AGREEMENT DOES NOT TRANSFER ANY PROPERTY RIGHTS TO THE USER. IN ACCORDANCE WITH NATIONAL LAWS AND WITH THIS LICENSING AGREEMENT THE USER ACQUIRES SOLELY THE RIGHT OF USING THE PACKAGE.

Installing DIPAX ClickMaster

1. Insert the DIPAX ClickMaster CD into the CD drive. The Setup routine will start automatically. In case the wizard does not start automatically, please click the setup.exe file on the CD.
2. The setup wizard will start and guide you through the installation of DIPAX ClickMaster in a few simple steps.
3. Choose between the German or English version of DIPAX ClickMaster.
4. At the end of the installation you can define whether ClickMaster is started automatically on starting Windows®.


Uninstalling DIPAX ClickMaster.

To uninstall ClickMaster from your computer, please choose “Software” from the computer’s control panel and delete “ClickMaster” from the shown list.

Note: ClickMaster runs under Windows 2000 / XP / Vista / 7

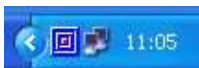
Starting and closing ClickMaster

Start DIPAX ClickMaster by clicking *Start > All Programs > DIPAX ClickMaster > ClickMaster* or simply by double clicking the link on the desktop.

To close ClickMaster, click the closing symbol  in the title bar of the click menu.

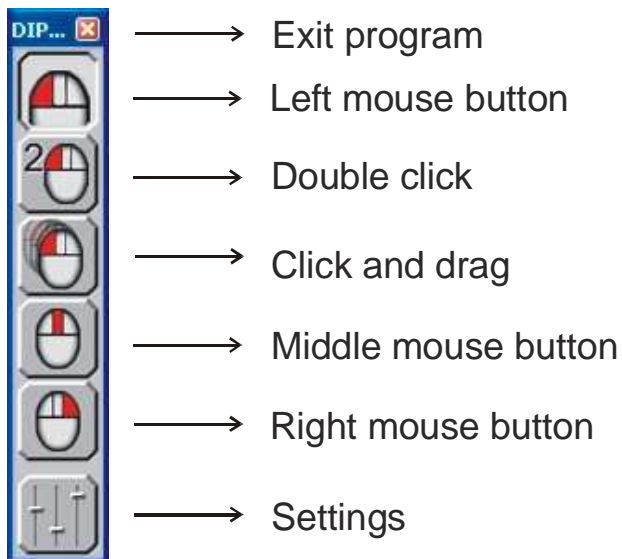
If the option “ShowConfigButton” is deactivated in the configuration file “ClickMaster.ini”, the closing symbol is not visible (see also chapter “Configuration file ClickMaster.ini”).

In this case right click the ClickMaster symbol in the task bar and then, “close ClickMaster”



Working with ClickMaster

ClickMaster emulates the buttons of a mouse automatically, without a mouse button needed to be used (Autoclick). For this purpose a menu is shown on the monitor (see picture). This menu allows the preselection of the emulated mouse button (action). The chosen action is then completed automatically when the mouse pointer is held still for a certain time at the target position.



Each pushbutton is assigned to a mouse button. By resting the mouse pointer on a certain pushbutton, either a new action can be preselected, or the current action can be switched off.

The preselected action stays active until a different action is selected, or the current action is deactivated.

In the shown example, the left mouse button is active, indicated by the pressed down pushbutton. While no action is preselected, Autoclick is only active inside the preselection menu, and a new action can be preselected.

After an action has been preselected, it can be released at any point of the screen. This is done by resting still the mouse pointer at the target position for an adjustable time period and inside an adjustable tolerance region (see chapter "*General settings*" on Page 8).

In case the mouse pointer is moved during release time, the countdown for releasing the action is restarted.

ClickMaster and DIPAX ScanMouse

ClickMaster is a self-contained software, but it is also part of the package DIPAX ScanMouse.

DIPAX ScanMouse is a self-contained software (not included in delivery of DIPAX ClickMaster), which allows running nearly all Windows programs with just one button or any other single sensor instead of a mouse (scanning method).

On starting or ending ScanMouse, ClickMaster is automatically started or shut down as well.

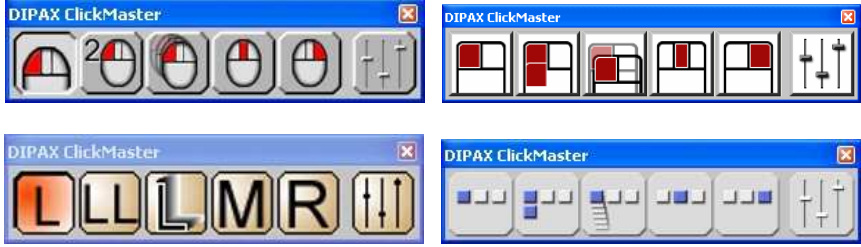
Note: When ClickMaster is run with ScanMouse, ClickMaster must not be listed in the Autostart file. Please take care when installing ClickMaster, that “start ClickMaster automatically” is not activated!




When running together with ScanMouse, ClickMaster works in a special mode. In this mode many functions (mostly connected to Autoclick) are not needed. For this reason they are deactivated.

Clicking the “Settings” push button, configurations as well for ClickMaster, as for ScanMouse can be made.

Options of appearance

The configurations menu (see chapter “*Appearance settings*” on page 10) allows configuring the appearance of ClickMaster individually in the sector “Appearance”. Users can choose from different pushbutton designs (see sample), different displays, and different sizes.


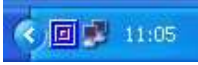
Designs	
	
<p>(Examples)</p> <p>Designs can be customized on request.</p>	

Displays		
Horizontal	Vertical	Dynamic
		<p>The menu is only shown if the mouse pointer is moved to the margin of the screen. Depending on advanced settings for the dynamic display the menu is shown on the mouse pointers reaching the left-most, right-most, upper-most, or bottom margin.</p> <p>The menu is faded out, as soon as the mouse pointer leaves the menu region.</p> <p>The menu will be shown at the current position of the mouse pointer. It either shows horizontally (if mouse pointer is at the top or bottom) or vertically (if mouse pointer is at right or left margin).</p> <p>This display mode is not available when running with ScanMouse.</p>
<p>2 rows</p>		
		

No display	In this appearance the click menu is invisible and left click is always active. As there is no pushbutton for configuration available, the configuration menu has to be opened differently (see next chapter).
<p>In all appearances (except “no display”) you can determine which pushbuttons (left click, right click etc.) are shown in the click menu (see chapter “<i>Appearance settings</i>” on Page 10).</p> <p>Also, it can be set, whether the click menu shows the pushbutton for configurations or not (see chapter “Configuration file 'ClickMaster.ini'” on Page 14).</p>	

Configuration menu

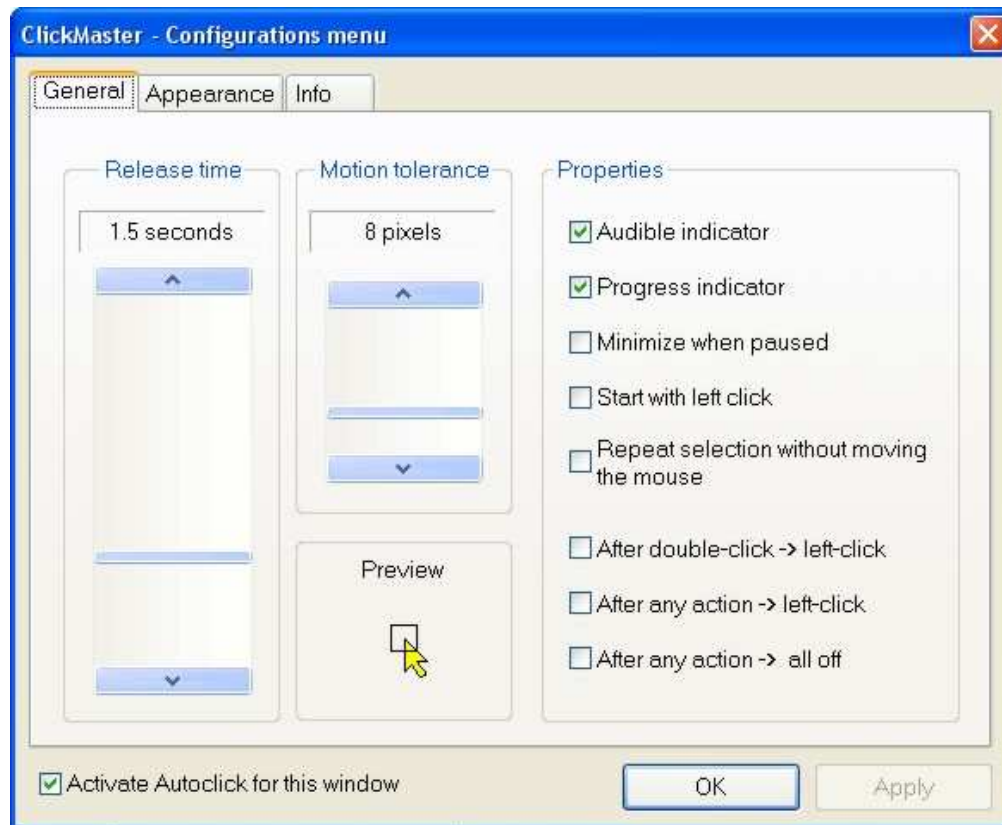
In the configuration menu the properties of ClickMaster are set. There are 3 ways of opening the menu:

1. Click the pushbutton  in the click menu.
2. Click the ClickMaster symbol  in the task bar.
3. If ClickMaster is already running, double clicking the ClickMaster icon on the desktop will start the configuration menu.

Alternative 1 is standard, alternative 2 and 3 can be used if, for example, the “configuration menu” pushbutton is blanked in the click menu (for details see chapter “Configuration file 'ClickMaster.ini'” on Page 14) or if “no display” is chosen as the current appearance.

General settings

Note: If running ClickMaster with ScanMouse (see chapter “ClickMaster and DIPAX ScanMouse” on Page 5), a menu is shown to choose which program to configure.



Release time:

Time in seconds until preselected action is carried out after resting mouse pointer still. Release process is started if the mouse pointer is rested still within motion tolerance.

Note: If the option “repeat chosen click without mouse movement” is active, motion tolerance does not matter (see further down)

Note: This feature is deactivated when running with ScanMouse

Motion tolerance:

Area in which mouse pointer may be moved without restarting countdown for release of action (tremor sensitivity). The chosen area is additionally shown in the preview.

Note: If the option “repeat chosen click without mouse movement” is active, motion tolerance does not matter (see further down)

Note: This feature is deactivated when running with ScanMouse

Audible indicator: If activated, an additional sound indicates the release of an action.

Progress indicator: If activated, a graphic indicator next to the mouse pointer shows the remaining time until the release of an action.

Note: This feature is deactivated when running with ScanMouse

Minimize when paused This feature minimizes the click menu if no action is selected. Only the deactivated pushbutton of the last chosen action is displayed.

Clicking it, makes it active again, and shows the other pushbuttons as well. Any pushbutton can be clicked again.

This feature makes sense, for example, in combination with a head control. The risk of performing an action by mistake is minimized by the smaller display of the menu.

Note: This feature is deactivated when running with ScanMouse

On start activate left click If this feature is activated, a left click is always performed after starting ClickMaster.

Repeat chosen click without mouse movement If this feature is activated, the chosen action is performed repeatedly (permanent click).

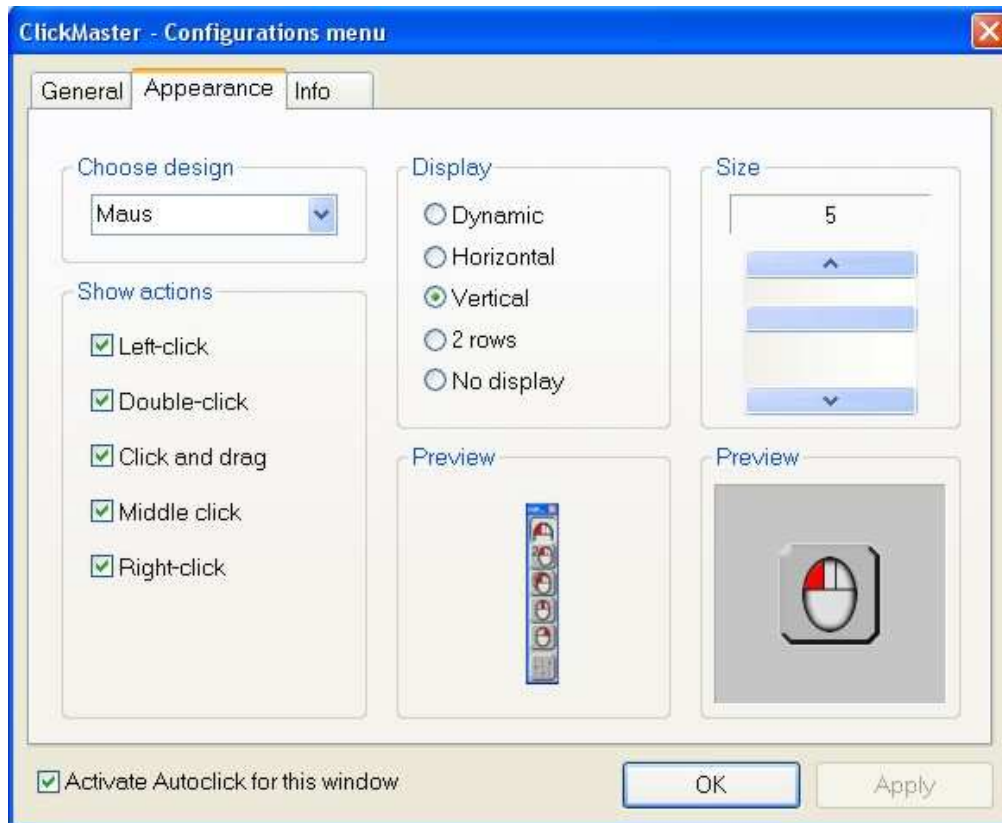
After double click -> left-click: If activated, after a double click automatically left-click is preselected.

After any action -> left-click: If activated, after any action (middle mouse button, right mouse button, click and drag, or double click), automatically left-click is preselected.

After any action -> all off: If activated, after any action (left mouse button, middle mouse button, right mouse button, click and drag, or double click), automatically all preselections are deactivated.

Note: This feature is deactivated when running with ScanMouse

Appearance settings



Choose design:

Following personal taste and sense of contrast, the appearance of the push buttons can be adjusted in this section (see chapter „Options of appearance“ on page 6).

Show actions:

In order to save space on the screen, push buttons currently not needed, can be deactivated. Deactivated push buttons are then no longer shown in the menu (see illustration below).



Display:

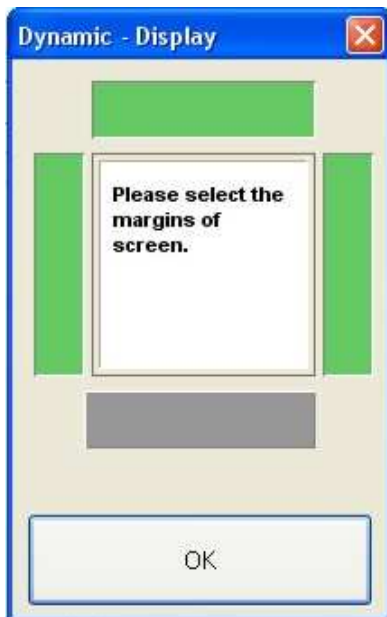
The menu can be shown in 5 different display modes: dynamic, horizontal, vertical, in two rows, or No Display. The chosen display is shown as a **preview** (see also chapter “Options of Appearance” on page 6).

Note: The “dynamic” mode is deactivated when running with ScanMouse.

Size: Here the size of the push buttons and thus the size of the menu can individually be adjusted. Seven possible sizes are available. A separate window shows a **preview**.

Optional settings for dynamic display

In this display mode the click menu is shown, if the mouse pointer touches the margin of the screen. As soon as the mouse pointer is moved away from the margin, the click menu is faded out again. A part of the desktop is not concealed all the time, but only when the click menu is needed.



By clicking the push areas (green = active, grey = not active) it can be determined at which margins of the screen the click menu is to be shown. In the example (see left) the click menu is shown, when the mouse pointer reaches the left-most, right-most, or top margin. At reaching the bottom the click menu will not be displayed.

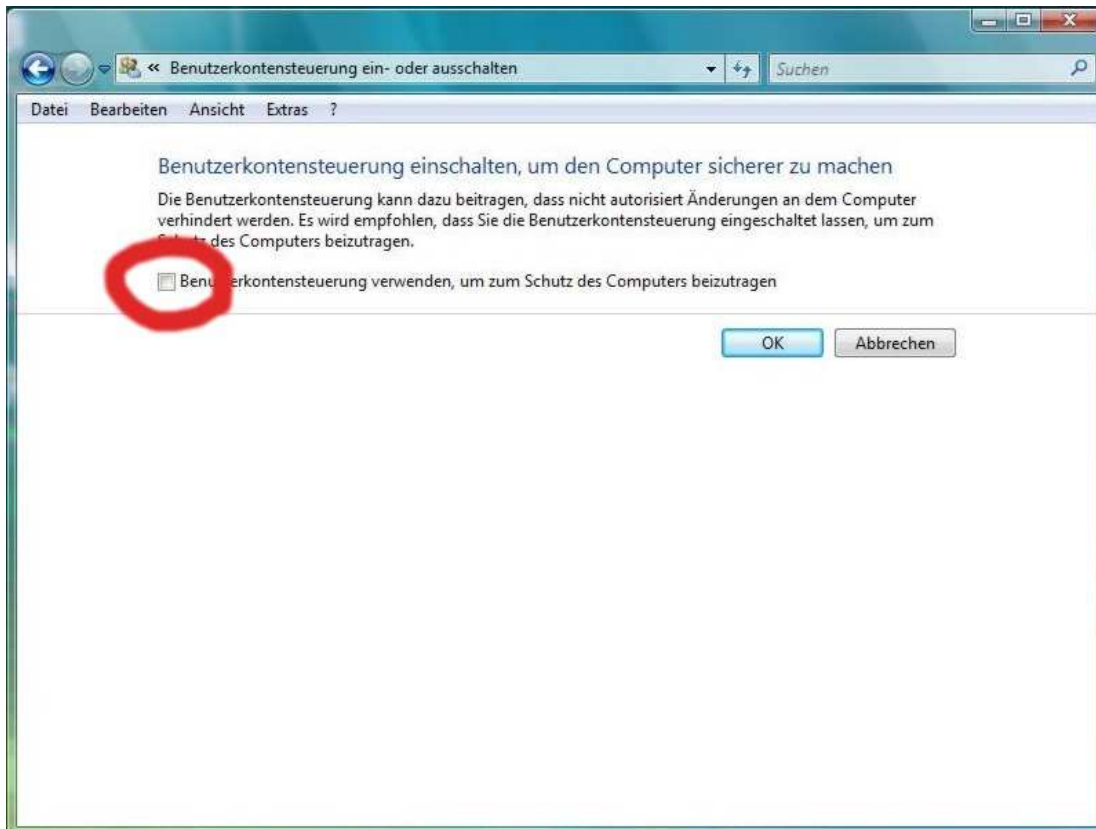
Note for Windows® Vista

New security functions of Windows® Vista produce problems with many applications for handicapped people. If User Account Control (UAC) is switched on, it is no longer possible to perform unlimited mouse clicks or mouse movements through software. This mainly affects native security queries such as “do you really want to quit” etc.

These security queries can only be answered using the standard mouse and not by using a software-controlled mouse (like ClickMaster).

Today's state of knowledge only seems to offer one solution:

User Account Control (UAC) in Windows® Vista must be switched off. This is done under Control Panel > User Administration > User Account Control (see screen shot).



Remote control of ClickMaster

ClickMaster can be started and closed by external applications.

Additionally, command lines are available, which allow to parametrise ClickMaster externally. The parameters are the same as in the configuration menu.

The following external commands are available:

Command	Description
ClickMaster.exe	If ClickMaster is not started already, this command starts it.
ClickMaster.exe	If ClickMaster is already started, this command opens the configuration menu.
/close	ClickMaster is closed <i>Example:</i> <i>ClickMaster.exe /close</i>
/ReleaseTime [time in ms]	Release time of the chosen click <i>Example:</i> <i>ClickMaster.exe /ReleaseTime 1500</i>
/MotionTol [tolerance in pixels]	Motion tolerance <i>Example:</i> <i>ClickMaster.exe /MotionTol 20</i>
/MenuSize [zoom factor]	Size of the click menu <i>Example:</i> <i>ClickMaster.exe /MenuSize 5</i>

Note: For all command-line commands ClickMaster must be opened already.

Configuration file 'ClickMaster.ini'

At '*My Documents\ClickMaster User Files*' you can find the file *ClickMaster.ini*. ClickMaster can be pre-configured by editing that file.

The following parameters are currently available:

Parameter	Description
COMMON	
ShowConfigButton = ?	1: The click menu shows the pushbutton for opening the configuration menu next to the mouse clicks. ClickMaster can always be closed via the 'close'-pushbutton in the title bar. 0: The click menu does not show the 'configuration' or 'close'-pushbutton. This makes it impossible for the user closing ClickMaster or changing the parameters by mistake.

Contact

Support:

Email: support@dipax.de

Postal address:

DIPAX
Berliner Str. 69
13189 Berlin
Germany
Tel: +49 (0) 30 509151-26
Fax: +49 (0) 30 509151-30
Email: info@dipax.de
Internet: www.dipax.de